



The Gaggle

Bringing You a Gaggle of News Monthly

Volume 3, Issue 3
October 2007

New and Improved Blocking Features

At Gaggle, student safety is of the utmost importance. Over the summer, Gaggle updated the blocked word feature and we want to discuss how these changes will affect your school.

How it Works

Gaggle has incorporated three levels of pre-populated word lists to choose from: Strict Blocked Word List, Standard Blocked Word List, and Permissive Blocked Word List. Schools also have the option of using no list at all. To determine which list is most appropriate for your school, click on the Blocked Word Settings tab at the bottom of the School Setup page. All student communication will then be compared to the Blocked Word List that your school has selected.

Under the Blocked Word Settings tab, schools also have the option of subscribing to our Spanish word list. We are also developing a CyberBully list, which targets communication that may be threatening in nature without using any of the blocked words.

Customizing the Blocked Word List

Any of these pre-populated blocked word lists can easily be tailored to better suit your school. Words can be added directly into the Custom Word List field on the

Blocked Word Settings tab. Use the following commands to add words. To block a full word, enter (f) followed by the full word you want to block. To block a partial word, enter (p) followed by the partial words you want to block.

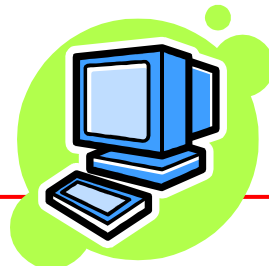
Example:

(f)stupid
(p)sex

Schools also have the option of subscribing to a list from another school within the same district. This option is useful for incorporating slang or jargon into your school's Blocked Word List that may be distinctive to your region. To do this, simply enter the offending words into one school's Custom word List and other school's can subscribe to that list on their Blocked Word Settings Tab. When updates are needed, only one list has to be changed!

As always, for assistance with adding blocked words or for more detailed instructions you can always call the Gaggle Customer Service team for assistance.

Happy Gagging!



Gaggle Tips

Allow Rules

Schools can easily allow a word that appears on the Blocked Word List by creating a short allow rule. Simply enter the following rule into your school's Custom Word list:
(a)full word

Blocked Addresses

In addition to the Blocked Word Lists, schools also have the ability to customize the Blocked Address List. By accessing the Addresses tab at the bottom of the School Setup page, you can see that we have populated the list with a number of domains and words we have already deemed to be inappropriate as part of an email address. Schools can customize this list with specific email addresses, domain names, or anyone outside of the school. Less time worrying about who your students can communicate with means more time utilizing your Gaggle accounts in the classroom!

For more detailed directions, please contact a Customer Service representative at Gaggle.

Curriculum Corner-Utilizing Attachments in Email

A key component of most technology standards is understanding how to send different file types as attachments. Teachers can encourage students to turn in assignments as an attachment, via their Gaggle account, to support state standards while promoting safe email practices. Teachers can rest easy since most commonly used attachments are filtered through our Anti Pornography Scanner (APS), Blocked Word Lists, and other filtering methods such as addresses and attachment types.

Please don't hesitate to contact Gaggle's Customer Service staff if you have any questions!
800-288-7750
admin@gaggle.net